

CERTIFICATE OF LOCATION OF GOVERNMENT CORNER

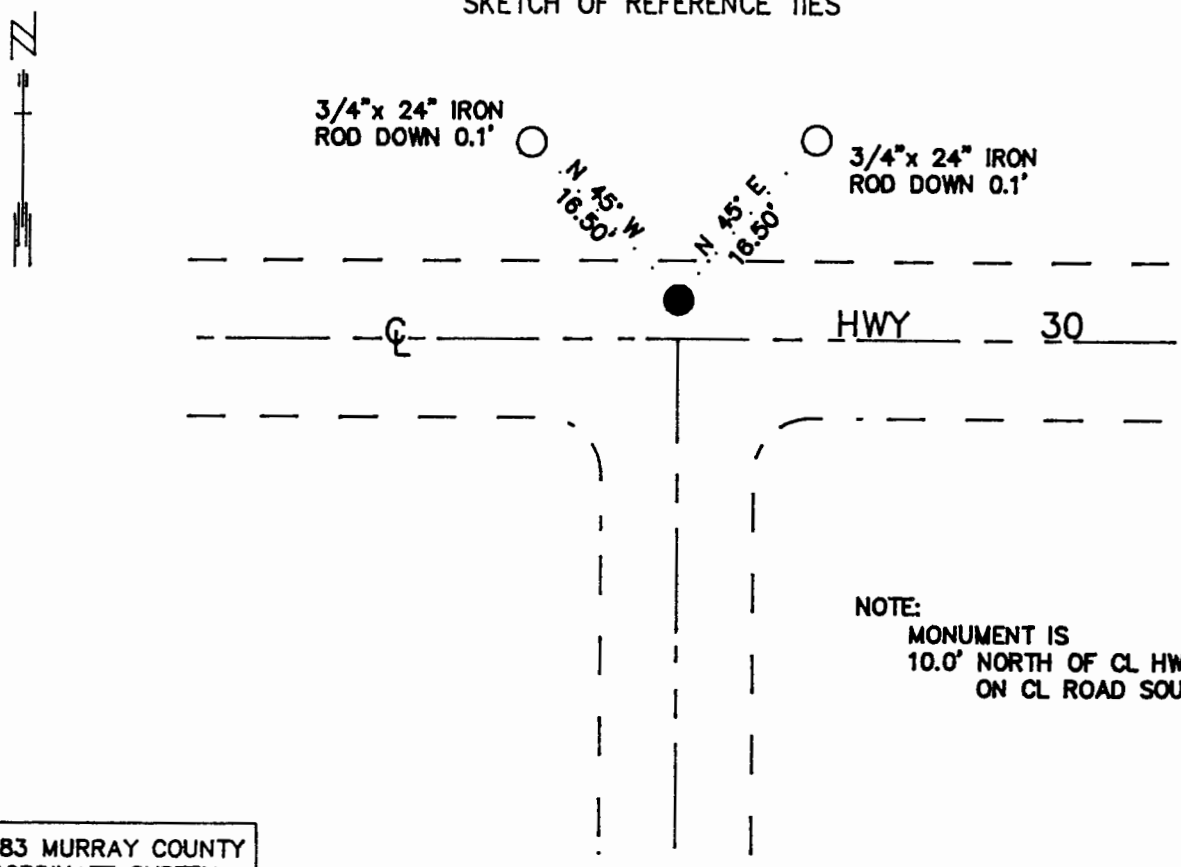
NORTHEAST Corner of Section 18, Township 106 N., Range 42 W., 5th P.M.

STATE OF MINNESOTA, County of MURRAY

At the corner location shown on the sketch:

- On _____ found a _____
DATE
- left monument as found, lowered monument, removed monument (explain)
- On 6/27/89 Placed a 1 1/4" X 1 1/4" X 5" PERFORATED STEEL TUBE WITH
DATE ALUMINUM CAP STAMPED "DNR SURVEY MARKER", DOWN 0.1'

SKETCH OF REFERENCE TIES



NOTE:
MONUMENT IS
10.0' NORTH OF CL HWY 30
ON CL ROAD SOUTH

1983 MURRAY COUNTY
COORDINATE SYSTEM
N=153008.001
E=458681.277

BEARINGS OBSERVED WITH COMPASS

Statement of evidence relative to this corner location is on back of page. 7/13/89
G-1225

I hereby certify that this document and the data contained herein was prepared by me or under my direct supervision.

Lowell B. Romer 7-21-89
SIGNATURE DATE

Registration No. 17005

Land Surveyor, Professional Engineer
 County Surveyor, County Engineer

OFFICE OF THE COUNTY RECORDER
County of Murray

I hereby certify that this document was filed in the Co. recorders office at 10:00 A.M. on the 24th day of July A.D., 1989

County Recorder James V. Johnson
By _____, Deputy

DOCUMENT NO. _____

Northeast Corner of Section 18, Township 106 North, Range 42 West

The DNR Bureau of Engineering contacted the following offices for survey information:

MN Secretary of State's Office
Murray County Offices of the Recorder and Highway Engineer
Mn/DOT Office in St. Paul
Mn/DOT Office in Willmar
Sioux Engineering, Inc., Office in Windom
Madsen Land Surveying Office in Fairmont
Bell Surveying, Inc., Office in Worthington
Lyle Moseng and Associates Office in Marshall

- 1866 U.S. General Land Office notes obtained from the Secretary of State's Office show the corner marked with a post in mound.
- 1887 Surveyor's Record Book A, on page 39, obtained from the County Recorder's Office contains a survey, surveyor not indicated. Survey shows corner but does not indicate what was found or set. The corner is shown:
2639.02 feet from the east quarter corner of Section 7
1557.6 feet from a point on the east line of Section 7 which is also on the southerly right-of-way of the Chicago, St. Paul, Minneapolis and Omaha Railway
- 1917 Right-of-Way Map for the Chicago, St. Paul, Minneapolis and Omaha Railway obtained from the DNR Bureau of Engineering shows a fence along the east line of Section 7 at Station 1831+69. A description of a monument at corner is not given and no distances are shown to it.
- No Date Right-of-Way map for Minnesota Trunk Highway 30 obtained from the Mn/DOT Office in St. Paul shows corner but does not indicate what was found or set. The corner is shown:
9.0 feet north of POT Station 1011+07.3
at the intersection of roads east, west, and south
in line with a fence north
- No Date A page in a field book that contains information about government corners obtained from the Mn/DOT Office in Willmar contains the same information as shown on the right-of-way map for Minnesota Trunk Highway 30.
- 1981 Field notes, worksheets, and a certificate of survey by Gary D. Martin, RLS #12967, obtained from Madsen Land Surveying show that corner was established per Mn/DOT data and a chiseled "X" in concrete pavement was made to mark its location. The following ties are shown to corner:
9.00 feet north of the center line of Highway 30 in line with the centerline of township road south
2668.38 feet from the east quarter corner of Section 7
2640.00 feet from the south quarter corner of Section 7
1320.00 feet from the southeast corner $W\frac{1}{2}$ $SE\frac{1}{4}$ of Section 7
- 1989 The DNR Bureau of Engineering conducted a search for this corner and found Highway 30 had been overlaid with bituminous. Located the south quarter corner and southeast corner $W\frac{1}{2}$ $SE\frac{1}{4}$ of Section 7 and measured 1319.70 ft. between them. Computed a position and search area for this corner on the extension of a line from the south quarter of Section 7 through the southeast corner $W\frac{1}{2}$ $SE\frac{1}{4}$ of Section 7 a distance of 1319.70 ft. from the southeast corner $W\frac{1}{2}$ $SE\frac{1}{4}$. Searched beneath the bituminous overlay at and around this computed position, but could not identify an "X". Computed position was found to measure:
2639.40 ft. from the south quarter corner of Section 7
2668.18 ft. from the east quarter corner of Section 7
10.0 ft. north of the center line of overlaid Highway 30

Analysis of the available information led the DNR Bureau of Engineering to conclude that the above mentioned computed position marks the location of the corner.